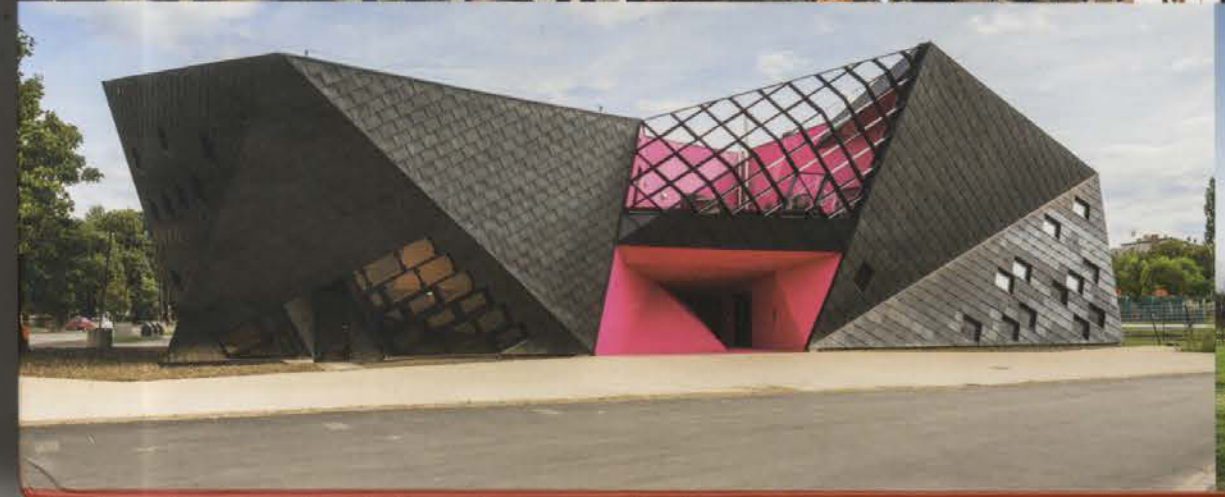
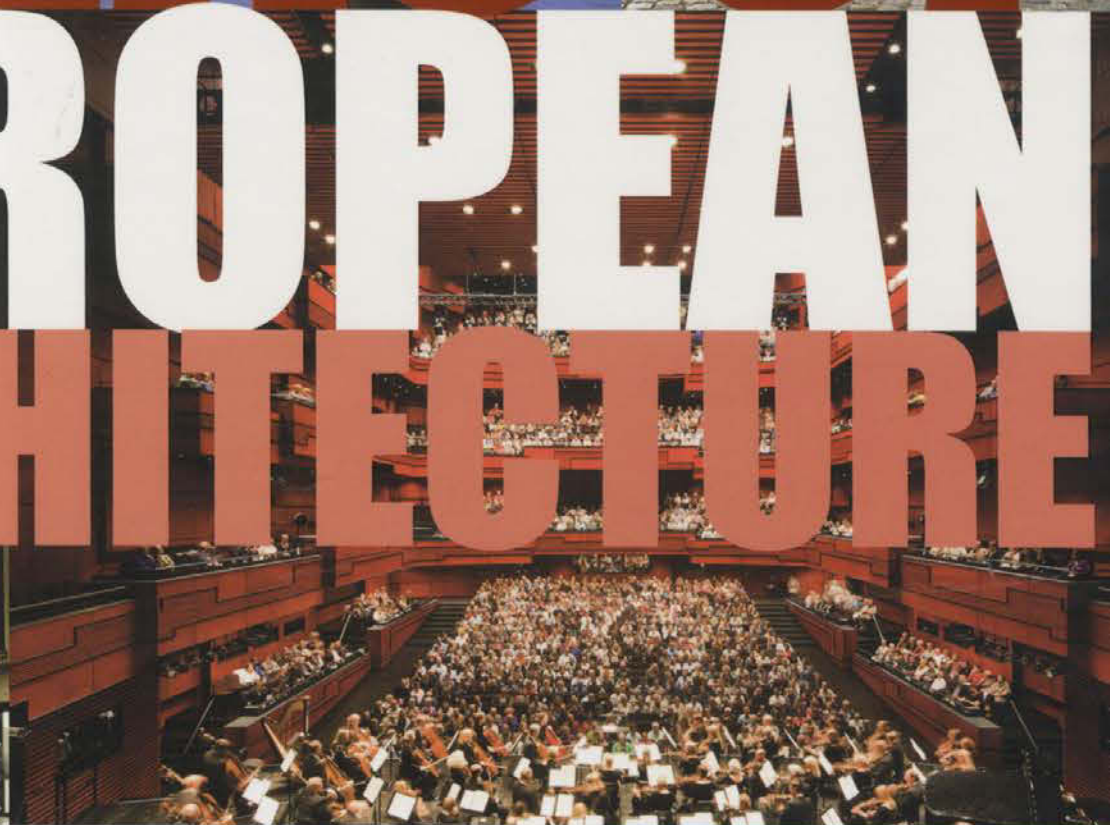
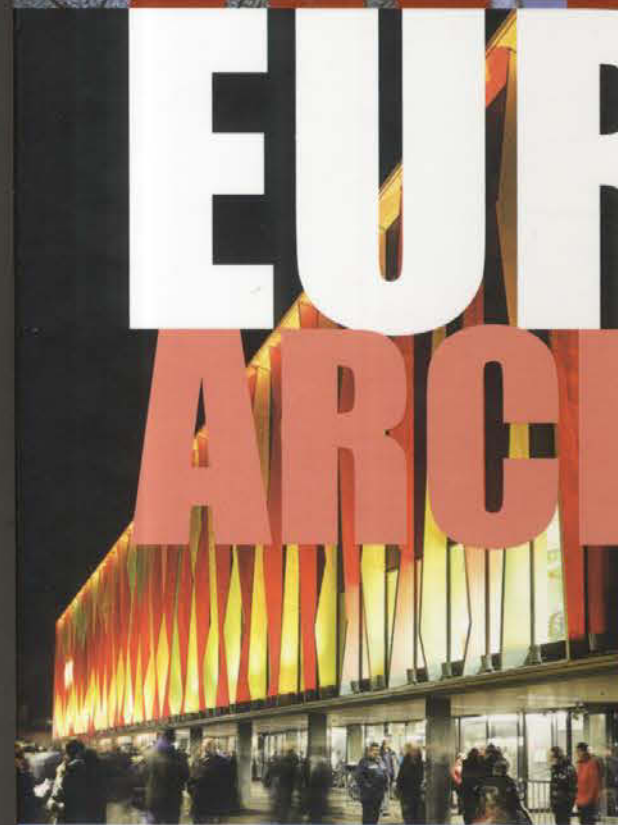
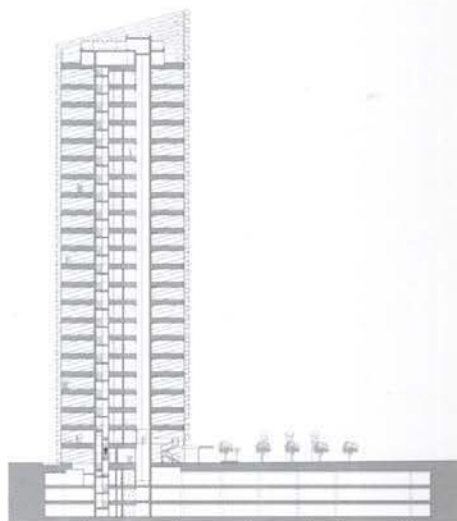


ATLAS OF EUROPEAN ARCHITECTURE





Puig Tower

The Plaza Europa was constructed halfway between the El Prat Airport and Barcelona city, with the intention of it becoming a new point of reference for the whole metropolitan area. One of the new towers is the new Puig corporate headquarters. Inside, the work areas unfold around a central core. Large glazed sections allow views of the city and filter a comfortable light into the space. The tower is surrounded by a pool of water that ends at the façade, where the building's entrance, emphasized by means of a metal protective cover, also offers protection from the rain.

